



Enterprising and astute Registered Architect with 13 years technical, entrepreneurial and operations experience providing versatile architectural solutions to diversified clients in the commercial, residential, institutional and industrial sectors.

For the past 6 years I have successfully managed my own full-service architectural practice, Stephan Benadé Architects t/a Creo-B Designs (Pty) Ltd that specialises in

the design and documentation of various projects covering commercial (offices, office parks), institutional (university faculties, sport halls, additions to schools), medical (clinics, ARV), residential (housing, estates and upmarket houses) as well as abattoirs/meat processing plants and holiday/vacation resorts.

I have participated in and led several big budget projects and have a proven track record in delivering projects within defined budgets and schedule constraints.

Able to run projects independently. Acumen extends to construction management able to ensure that sub-contractors comply with contractual terms and conditions, standards, procedures, regulations and specifications. Excellent communication, interpersonal and leadership skills able to drive, motivate team effort in meeting set organisational goals.

## FEATURED ARTICLES

### Young blood



Follow the link below to view interview:

[https://issuu.com/sapoa052013/docs/south\\_african\\_property\\_review\\_march](https://issuu.com/sapoa052013/docs/south_african_property_review_march)

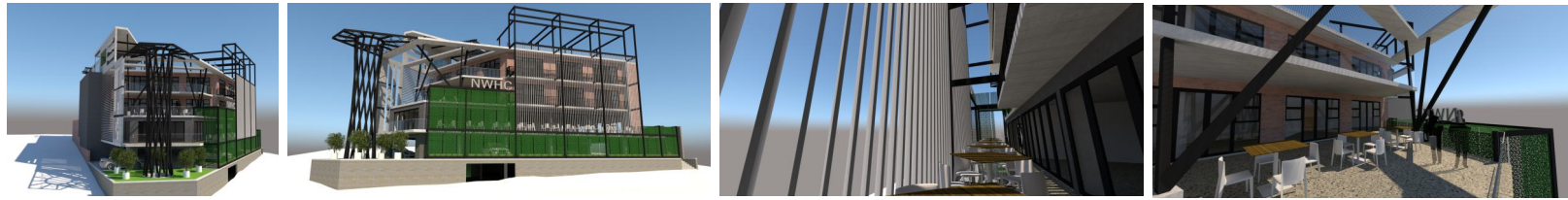
SOUTH AFRICAN  
**HOME OWNER**  
WELCOME HOME

Follow the link below to view the article:

<https://www.sahomeowner.co.za/modern-luxury-living-design-principles/>

# DESIGNS

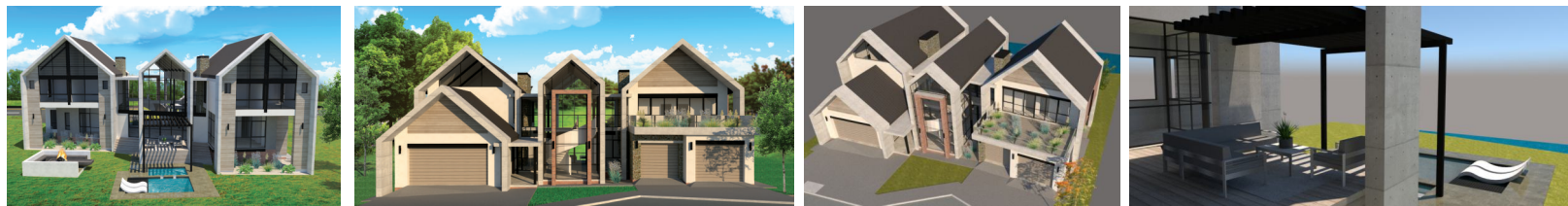
## DESIGN: NWHC Concept, Mahikeng



## DESIGN: NWU Pharmacy & Life Sciences Faculties (Joint Venture with Conradie & Greyvensteyn)



## DESIGN: Vaal de Grace – House 393, Vaal de Grace Golf Estate



## DESIGN: House Demetriou – House 761, Savannah Country Wildlife Estate



## DESIGN: House Baz – House 742, Savannah Country Wildlife Estate





# CONTACT

Reg No: 2012/161688/07

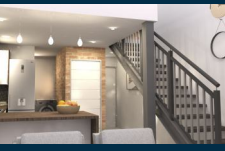


**Cell:**  
Stephan Benadé  
+27(0) 74 507 7735

**Facebook:**  
Stephan Benade Architects

**Email:**  
info@benadearchitecture.com  
stephan@benadearchitecture.com

**Websites:**  
[www.benadearchitecture.com](http://www.benadearchitecture.com)  
[www.greenappleinterior.com](http://www.greenappleinterior.com)



## Address:

### Western Cape/ South Cape

Western Cape, Garden Route: 2 Fairview Office Park,  
1st Street, George, 6529

### Gauteng/Pretoria

The Village Office Park, 1st Floor, Block D, Cnr  
Glenwood Road and Oberon Avenue, Fairie Glen,  
Pretoria, 0081

### North West/Klerksdorp

103 Readman Street, Wilkoppies, Klerksdorp, 2571

FUNCTIONAL  
ARCHITECTURE  
AND BEAUTIFUL  
SPACES FOR  
EVERYDAY LIVING



STEPHAN  
BENADE  
ARCHITECT

WE STRIVE  
for a high level of  
workmanship and  
craftsmanship to  
ensure complete  
overall design,  
construction and  
client satisfaction.

## ABOUT



Stephan Benadé Architects was established as a full service architectural practice in June 2015.

Since inception, the company has shown considerably fast growth and still grows stronger every day.

The principal and head architect Stephan Benadé has been practicing architecture full time since the start of 2010 and has continually been involved in the building construction milieu. In this period he has worked at top architectural firms to widen his knowledge and scope of architectural projects and designs. From the beginning emerging himself into large scale projects to gain maximum knowledge.

In this period leading up to the establishment of Stephan Benadé Architects, experience in a vast variety of designs was obtained ranging from new residential design (sub-economic to upmarket), additions and alterations to existing buildings (residential as well as commercial), renovations and restorations, commercial projects, offices (office blocks and parks), institutional (university faculties, sports halls, additions to schools), medical (clinics, ARV) as well as abattoirs/meat processing plants and even holiday/vacation resorts.

Stephan Benadé Architects believe in South Africa and its people, as the principal sees himself as part of Southern Africa's wonderful fabric of life. Therefore the practice is continually busy with community driven projects to uplift and help in which ever form is needed, giving back the support so greatly received from the community. Examples here of is sub-economic housing, alterations and interior design/layout for a church, addition to school for children with mental physical disabilities.

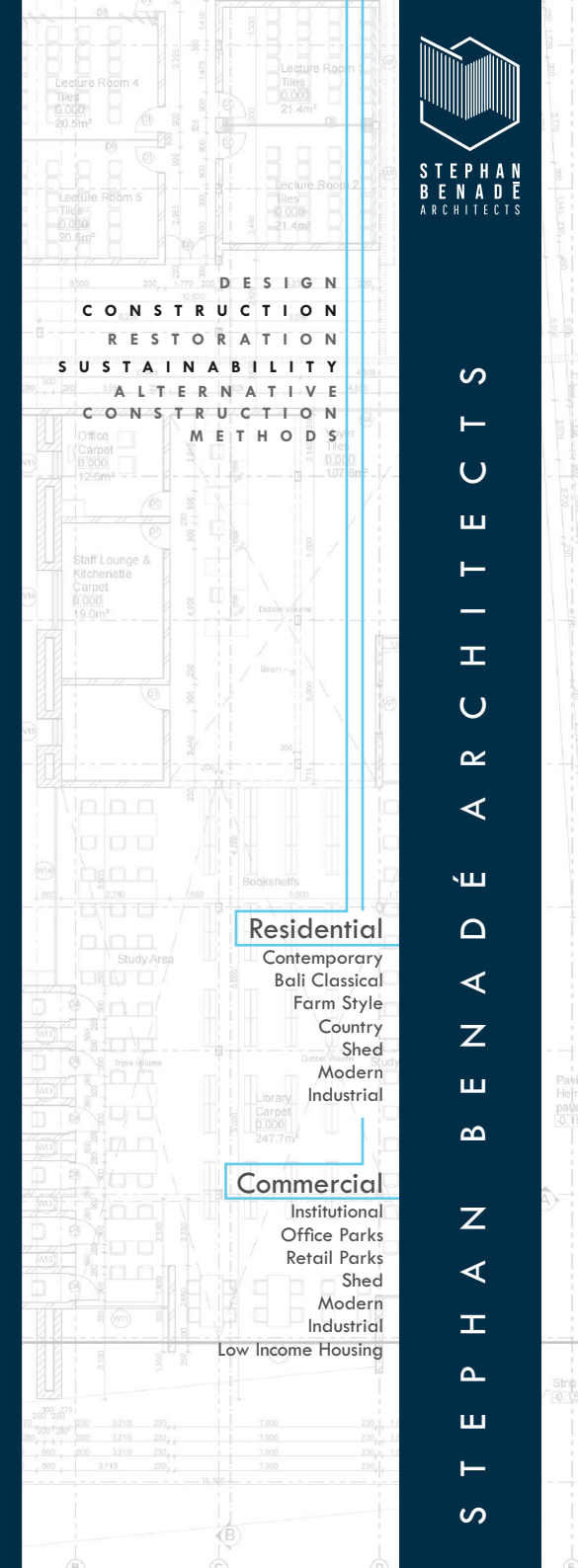
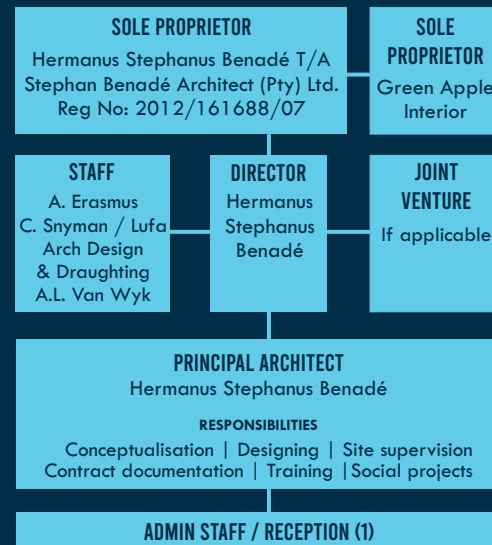
At Stephan Benadé Architects we strive to always find the best suitable design solution to each and every design we do and strive for a high level of workmanship and craftsmanship to ensure complete overall design, construction and client satisfactory. The passion and commitment is evident in every project done in the practice as we want to turn conceptual dreams in to build realities to satisfy the client's needs.

Stephan Benadé Architects strive to render the best service with a balance of theoretical knowledge and practice to achieve the best possible designs solution. This design solution is merged with the latest knowledge in technological advances in material and sustainability to truly guarantee only the best solutions for our clients. Add this to the practice's commitment to give the best possible service to each and every client and end user, the ultimate success of a project is achieved.

## INDUSTRY EXPERIENCE



## COMPANY ORGANOGRAM



### Residential

Contemporary  
Bali Classical  
Farm Style  
Country  
Shed  
Modern  
Industrial

### Commercial

Institutional  
Office Parks  
Retail Parks  
Shed  
Modern  
Industrial  
Low Income Housing



STEPHAN  
BENADE  
ARCHITECTS

STEPHAN BENADE ARCHITECTS